



SUMATHI REDDY

INSTITUTE OF TECHNOLOGY FOR WOMEN

L e a r n i n g a t i t s b e s t

Affiliated to JNTUH - Approved by AICTE

No. SRITW/Prin/2020

Date: 08-01-2020

CIRCULAR

All the students are hereby informed that our college is offering value-added courses. Interested students can register their names with the respective course coordinator. A detailed brochure regarding the courses is available in the notice board.

Criteria for Certification Attendance $\geq 75\%$ and marks secured $\geq 70\%$.

: Imp dates:

Registrations opening date: 10-01-2020

Registrations closing date: 25-01-2020

Course start date: 27-01-2020

Course end date: 02-03-2020

Courses offered:

1. Web Services
2. PCB Designing
3. Communication Skills& Human Values
4. Advanced Software Testing

Copy to

HOD (CSE, ECE, EEE, H&SC)

Administrative Officer

In-charge, Exam Branch

Library

Notice Board

To be read in classrooms

Principal

Principal

Sumathi Reddy Institute of Technology for Women

Ananthasagar (V), Hasanparthy (M)

WARANGAL - 506 371 (TS)



SUMATHI REDDY
INSTITUTE OF TECHNOLOGY FOR WOMEN
Learning at its best
Affiliated to JNTUH, Approved by AICTE

A Course on PCB DESIGNING

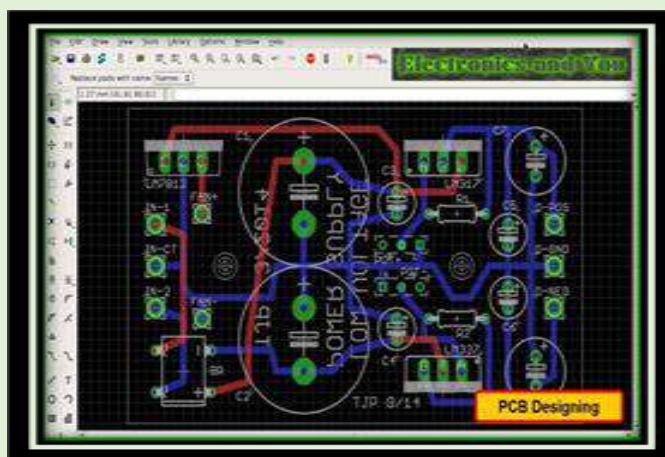
Organized by
Department of Electronics and Communication Engineering

Course Objectives:

- To design and fabricate PCB for prototyping as well as in Industrial Production environment.
- It will help students to innovate faster with electronics technology.
- PCB (Printed Circuit Board) designing is an integral part of each electronics products and this program is designed to make students capable to design their own projects PCB up to industrial grade.
- Identifying Electronic Components Symbols & Footprints
- Constructing your Component libraries & use them effectively
- Schematic creation & interpretation
- Effective use of design rules & interfacing between schematic & PCB

Course Co-ordinator:

R.Nethravathi
Asst. Prof, CSE
Contact no: 8431929192



Course start date: 27-01-2020

Course end date: 02-03-2020

Venue:

Lecture Hall1: 201

Lecture Hall2: 202

Timings: 3:10PM-4:00PM

For registrations contact: [8431929192](tel:8431929192)

Course Instructors:

1. Ms.V. Hema

Asst. Prof, CSE

2.Mr.K.Ravikiran

Asst. Prof, ECE

Rajan

Principal

Sumathi Reddy Institute of Technology for Women
Anand Nagar (V), Hasanparthy (M)
WAPANGAL - 508 371 (TS)



SUMATHI REDDY

INSTITUTE OF TECHNOLOGY FOR WOMEN

L e a r n i n g a t i t s b e s t

Affiliated to JNTUH - Approved by AICTE

PCB DESIGNING

Date: 27-01-2020 to 02-03-2020

Course Content

Introduction to PCB designing concepts & Brief History

What is PCB, Difference between PWB and PCB?

- Types of PCBs: Single Sided (Single Layer), Multi-Layer (Double Layer, PCB Materials,
- Introduction to Electronic design Automation (EDA), Brief History of EDA, Latest Trends in Market, How it helps and why it requires,
- Different EDA tools
- Introduction to SPICE and PSpice Environment
- Introduction and Working of PROTEUS
- Component introduction and their categories Types of Components
- Active Components: Diode, Transistor, MOSFET, LED, SCR, Integrated Circuits (ICs)
- Passive Components, Resistor, Capacitor, Inductor, Transformer
- Speaker/Buzzer Component Package Types, Through Hole Packages
- Axial lead, Radial Lead, Single Inline Package (SIP), Dual Inline Package (DIP), Transistor Outline (TO)
- Pin Grid Array (PGA), Through Hole Packages
- Metal Electrode Face (MELF), Leadless Chip Carrier (LCC), Small Outline Integrated Circuit (SOIC), Quad Flat Pack (QFP) and Thin QFP (TQFP), Ball Grid Array (BGA), Plastic Leaded Chip Carrier (PLCC)
- **Introduction to Development Tools**
- Introduction to PCB Design using OrCAD tool, Introduction to PCB Design using PROTEUS tool

Detailed description and practical of PCB designing PCB Designing Flow Chart

- Schematic Entry, Net listing, PCB Layout Designing, Prototype Designing
- Design Rule Check (DRC)
- Design for Manufacturing (DFM), PCB Making Printing
- Etching, Drilling, Assembly of components Description of PCB Layers, Electrical Layers
- Top Layer, Mid Layer, Bottom Layer, Mechanical Layers, Board Outlines and Cutouts
- Drill Details, Documentation Layers, Components Outlines, Reference Designation, text Keywords & Their Description
- Footprint, Pad stacks, Tracks, Color of Layers, PCB Track Size Calculation Formula
- PCB Materials, Standard FR-4 Epoxy

Principal

Sumathi Reddy Institute of Technology for Women

Ananthasagar (V), Hasanparthy (M)

WARANGAL - 506 371 (TS)

Ananthasagar, Hasanparthy, Warangal -506371, Telangana. Website: www.sritw.org

Phone no: 0870-2818302. Email: principal@sritw.org



SUMATHI REDDY

INSTITUTE OF TECHNOLOGY FOR WOMEN

L e a r n i n g a t i t s b e s t

Affiliated to JNTUH - Approved by AICTE

Course Outcomes

After completion of the course students will be able to learn

- Basics of PCB designing.
- Apply advance techniques, skills and modern tools for designing and fabrication of PCBs.
- Apply the knowledge and techniques to fabricate Multilayer, SMT and HDI PCB.
- Understand a single layer and multilayer PCB
- Create and fabricate a PCB
- Evaluate and test a PCB



Rijan

Principal

Sumathi Reddy Institute of Technology for Women
Ananthasagar (V), Hasanparthy (M)
WARANGAL - 506 371 (TS)



SUMATHI REDDY

INSTITUTE OF TECHNOLOGY FOR WOMEN

Learning at its best

Affiliated to JNTUH - Approved by AICTE

List of students Registered for PCB designing

Batch: 1

Date: 27-01-2020 to 02-03-2020

S. no	Roll no	Name of the Student
1	206Y1A0441	PARIPELLI NAVYA
2	206Y1A0442	PASHIKANTI SANITHA
3	206Y1A0443	PASHIKANTI VISHWANI
4	206Y1A0444	PENDYALA AKHILA
5	206Y1A0445	PENDYALA HARITHA
6	206Y1A0446	PITTA NIKSHIPTHA
7	206Y1A0447	POTHARAJU GAYATHRI
8	206Y1A0448	PUTTAPAKA SANJANA
9	206Y1A0449	RACHAKONDA MALAVIKA
10	206Y1A0450	RAJOJU VINEELA
11	206Y1A0451	RASA SINDHU
12	206Y1A0452	SARA USHA
13	206Y1A0453	SHRUNGARAPU AKHILA
14	206Y1A0454	SINDHE GAYATHRI
15	206Y1A0455	SREERAMOJU SUNETHRI
16	206Y1A0456	THALLAPPELLY SHIRISHA
17	206Y1A0457	THATIKONDA VAISHNAVI
18	206Y1A0458	THATIPAMULA JAAHNAVE
19	206Y1A0459	THELU POOJITHA
20	206Y1A0460	THUMMA MEGHANA
21	206Y1A0461	VURA AKHILA
22	206Y1A0462	YEBUSHI NIKITHA
23	166Y1A0224	VEERAMALLA MEGHANA
24	176Y5A0201	ANUMALA SHIRISHA
25	176Y5A0202	CHENNURI JYOTHSNA
26	176Y5A0203	DUDDELA SUNILA
27	176Y5A0204	KADEVERGULA VISHNUPRIYA
28	176Y5A0205	KALLEM GOUTHAMI
29	176Y5A0206	KANDULA NIKITHA
30	176Y5A0207	KUNDE MANEESHA
31	176Y5A0208	MADASU PRIYANKA
32	176Y5A0209	MAMINDLA SUPRAJA
33	176Y5A0210	MANDA RASHMITHA
34	176Y5A0211	MULUGURI SRILEKHA
35	176Y5A0212	MUNJA AKHILA

Rajan
P. Netha
Principal

Course-coordinator

Sumathi Reddy Institute of Technology for Women

Ananthasagar (M), Hasanparthy (M)

Ananthasagar, Hasanparthy, Warangal -506371, Telangana. Website: www.sritw.org

Phone no: 0870-2818302. Email: principal@sritw.org.

WARANGAL - 506 371 (TS)



SUMATHI REDDY

INSTITUTE OF TECHNOLOGY FOR WOMEN

Learning at its best

Affiliated to JNTUH - Approved by AICTE

List of students registered for PCB designing

Batch: 2

Date: 27-01-2020 to 02-03-2020

Sno	Roll No	Name
1	176Y5A0213	NAGULA RAVALI
2	176Y5A0214	NALLAVENI SINDHU PRIYA
3	176Y5A0215	PENDOTA BHARGAVI
4	176Y5A0216	PULLURI ALEKYA
5	176Y5A0217	VASKULA SHINEY
6	186Y1A05A0	SAMRA ALEEM
7	186Y1A05A1	SHAIK SONI
8	186Y1A05A2	SHAVALLA SHIREESHA
9	196Y5A0401	ANTHONY LORINA JOSEPH
10	196Y5A0402	CHILUVERU SHIRISHA
11	196Y5A0403	DEVULAPALLY NIKHITHA
12	196Y5A0404	GORANTALA SAI SHIVANI
13	196Y5A0405	GOURU MANISHA
14	196Y5A0406	JERRIPOTHULA SUSMITHA
15	196Y5A0407	JETTY RAMYA
16	196Y5A0408	KANDAGATLA NEETHA
17	196Y5A0409	KASULA SHIVANI
18	196Y5A0410	KHUSTAR JAHAN
19	196Y5A0411	KONGARI KEERTHANA
20	196Y5A0412	MACCHA SARASWTHI
21	196Y5A0413	MASIHA NAAZ
22	196Y5A0414	MITTAPALLI MADHUMITHA
23	196Y5A0415	RANIYA ZAINAB
24	196Y5A0416	RAVULA NIHARIKA
25	196Y8A0401	GURRAM YASHASWI
26	186Y5A0403	BURRA NAVYA
27	216Y5A0401	ANUMANDLA RISHIKA
28	216Y5A0402	ARSHIYA TABASSUM
29	216Y5A0403	BAISA SHIVANI BAI
30	216Y5A0404	BAJYAM KAVYA
31	216Y5A0405	BANDIKATLA SHIVANI
32	216Y5A0406	BOGA SAHITHYA
33	216Y5A0407	BOLUKONDA GAYATHRI
34	216Y5A0408	CHINTHAKINDI KAVYA
35	216Y5A0409	DONTHULA PRASANNA
36	216Y5A0410	HUSNA HUMERA
37	216Y5A0411	KATKURI SUJITH MEGHANA
38	216Y5A0412	KOLIPAKA SOWMYA

Rijan

Principal

Sumathi Reddy Institute of Technology for Women
Ananthasagar (V), Hasanparthy (M)
WARANGAL - 506 371 (TS)



SUMATHI REDDY

INSTITUTE OF TECHNOLOGY FOR WOMEN

Learning at its best

Affiliated to JNTUH - Approved by AICTE

39	216Y5A0413	KUNDURU PRANAVI
40	216Y5A0414	MADIGA PRATHYUSHA
41	216Y5A0415	MANDA CHANDANA
42	216Y5A0416	MILKURI SHUSHRUTHA
43	216Y5A0417	MUNJA KALYANI

R. Ketha

Course-coordinator

Rijan

Principal

**Sumathi Reddy Institute of Technology for Women
Ananthasagar (V), Hasanparthy (M)
WARANGAL - 506 371 (TS)**

Academic Year : 2019-2020

PCB DESIGNING

BATCH-I

Course Instructor : V.HEMA

DATE :			19/10	21/10	21/10	22/10	23/10	24/10	24/10	25/10	26/10	27/10	30/10	31/10	1/11	2/11	2/11	4/11	5/11	6/11	7/11	8/11	8/11	11/11	11/11	13/11	14/11	14/11	15/11	16/11	16/11	18/11
SNO	ROLL NO	NAME	1	2	3	4	5	6	7	8	9	10	11	12	13	14	15	16	17	18	19	20	21	22	23	24	25	26	27	28	29	30
1	206Y1A0441	PARIPPELLI NAVYA	1	2	3	4	5	6	7	A	8	9	10	11	12	13	14	15	A	16	17	18	19	20	21	22	A	23	24	25	A	26
2	206Y1A0442	PASHIKANTI SANITHA	1	2	3	A	4	5	6	7	8	9	10	11	A	12	13	14	15	16	17	18	19	20	A	21	22	23	24	25	26	27
3	206Y1A0443	PASHIKANTI VISHWANI	1	2	3	4	5	6	7	8	A	9	10	11	12	13	14	15	16	A	17	18	19	20	21	22	23	24	25	A	26	27
4	206Y1A0444	PENDYALA AKHILA	1	2	3	4	A	5	6	7	8	9	10	11	12	13	A	14	15	16	17	18	19	20	21	22	23	A	24	25	26	27
5	206Y1A0445	PENDYALA HARITHA	1	2	3	4	5	6	7	A	8	9	10	11	12	13	14	15	A	16	17	18	A	19	20	21	22	23	24	25	26	A
6	206Y1A0446	PITTA NIKSHIPTHA	1	2	3	4	5	6	7	8	9	10	11	12	13	14	15	16	17	18	19	20	21	22	23	24	A	25	A	26	A	27
7	206Y1A0447	POTHARAJU GAYATHRI	1	2	A	3	4	5	6	7	8	A	9	10	11	12	13	14	15	16	A	17	18	19	20	21	A	22	23	24	25	26
8	206Y1A0448	PUTTAPAKA SANJANA	1	2	3	4	5	6	7	8	9	A	10	11	12	A	13	14	15	16	17	18	A	19	20	21	22	23	24	25	26	27
9	206Y1A0449	RACHAKONDA MALAVIKA	1	2	3	A	4	5	6	7	8	9	10	A	11	12	13	14	15	16	17	18	19	20	A	21	22	23	24	25	26	27
10	206Y1A0450	RAJOJU VINEELA	1	2	3	4	5	6	7	A	8	9	10	11	12	13	A	14	15	16	17	18	19	20	21	A	22	23	24	25	26	27
11	206Y1A0451	RASA SINDHU	1	A	2	3	4	5	6	7	8	9	10	A	11	12	13	14	15	16	17	18	19	20	21	22	23	24	A	25	26	27
12	206Y1A0452	SARA USHA	1	2	3	4	5	A	6	7	8	9	10	11	12	13	A	14	15	16	17	18	19	20	21	22	23	24	25	26	27	A
13	206Y1A0453	SHRUNGARAPU AKHILA	1	2	3	A	4	5	6	7	8	9	10	11	12	13	14	A	15	16	17	18	19	20	A	21	22	23	24	A	25	26
14	206Y1A0454	SINDHE GAYATHRI	1	2	3	4	5	6	7	A	8	9	10	11	12	A	13	14	15	16	17	18	19	20	A	21	22	23	24	25	26	27
15	206Y1A0455	SREERAMOJU SUNETHRI	1	2	A	3	4	5	6	7	8	9	10	11	12	13	14	A	15	16	17	18	19	20	21	22	23	24	25	A	26	27
16	206Y1A0456	THALLAPPELLY SHIRISHA	1	2	3	4	5	6	7	8	A	9	10	11	12	13	14	15	16	17	A	18	19	20	21	22	23	24	25	26	A	27
17	206Y1A0457	THATIKONDA VAISHNAVI	1	2	3	4	A	5	6	7	8	9	10	11	12	13	14	A	15	16	17	18	19	20	21	22	23	A	24	25	26	27
18	206Y1A0458	THATIPAMULA JAASHNAVE	1	2	3	4	5	6	7	A	8	9	10	11	12	13	14	15	16	A	17	18	19	20	21	22	23	24	A	25	A	26
19	206Y1A0459	THELU POOJITHA	1	2	A	3	4	5	6	7	8	9	A	10	11	12	13	14	15	16	17	18	A	19	20	21	22	23	24	25	26	27
20	206Y1A0460	THUMMA MEGHANA	1	2	3	4	5	6	7	A	8	9	10	11	12	13	A	14	15	16	17	18	19	A	20	21	22	23	24	25	26	27
21	206Y1A0461	VURA AKHILA	1	2	3	A	4	5	6	7	8	9	A	10	11	12	13	14	15	16	A	17	18	19	20	21	22	23	A	24	25	26
22	206Y1A0462	YEBUSHI NIKITHA	1	2	3	4	5	A	6	7	8	9	10	11	12	A	13	14	15	16	17	18	A	19	20	21	A	22	23	24	25	26
23	166Y1A0224	VEERAMALLA MEGHANA	1	A	2	3	4	5	6	7	8	9	10	11	12	13	A	14	15	16	17	18	19	20	A	21	22	23	24	25	A	26
24	176Y5A0201	ANUMALA SHIRISHA	1	2	3	4	5	6	7	A	8	9	10	A	11	12	13	14	15	16	17	18	A	19	20	21	22	23	24	25	26	27
25	176Y5A0202	CHENNURI JYOTHSNA	1	2	3	4	5	A	6	7	8	9	10	11	12	13	A	14	15	16	17	18	19	20	21	22	A	23	24	25	26	27
26	176Y5A0203	DUDELA SUNILA	1	2	3	4	5	6	7	8	A	9	10	11	12	13	14	15	A	16	17	18	19	20	A	21	22	23	24	25	26	27
27	176Y5A0204	KADEVERGULA VISHNUPRIYA	1	2	3	A	4	5	6	7	8	9	10	11	A	12	13	14	15	16	17	18	19	20	21	A	22	23	24	25	26	27
28	176Y5A0205	KALLEM GOUTHAMI	1	2	3	4	5	6	A	7	8	9	10	11	12	13	14	A	15	16	17	18	19	20	A	21	22	23	24	25	26	27
29	176Y5A0206	KANDULA NIKITHA	1	2	3	4	5	A	6	7	8	9	A	10	11	12	13	14	15	16	17	18	19	A	20	21	22	23	24	25	A	26
30	176Y5A0207	KUNDE MANEESHA	1	A	2	3	4	5	6	7	8	9	10	11	12	13	A	14	15	16	17	18	19	20	21	A	22	23	24	25	26	27
31	176Y5A0208	MADASU PRIYANKA	1	2	3	4	5	6	7	8	A	9	10	11	12	13	14	15	A	16	17	18	19	20	21	A	22	23	24	25	26	27
32	176Y5A0209	MAMINDLA SUPRAJA	1	2	3	4	5	6	A	7	8	9	10	11	A	12	13	14	15	16	17	18	19	20	A	21	22	23	24	25	26	27
33	176Y5A0210	MANDA RASHMITHA	1	2	3	4	5	6	7	8	A	9	10	11	12	13	14	15	A	16	17	18	19	20	A	21	22	23	24	25	26	27
34	176Y5A0211	MULUGURI SRILEKHA	1	2	3	4	A	5	6	7	8	9	10	11	12	A	13	14	15	16	17	18	19	A	20	21	22	23	24	25	26	27
35	176Y5A0212	MUNJA AKHILA	1	2	3	4	5	6	7	A	8	9	10	11	12	13	14	A	15	16	17	18	19	20	A	21	22	23	24	25	26	27

Sumathi Reddy Institute of Technology for Women

Ananthasagar (M), Hanamkonda (M)

WARRANGAL-506374 (TS)

Academic Year : 2019-2020

PCB DESIGNING

BATCH-2

Course Instructor : K.RAVI KIRAN

DATE :			19/10	21/10	23/10	25/10	27/10	29/10	31/10	03/11	05/11	07/11	09/11	11/11	13/11	15/11	17/11	19/11	21/11	23/11	25/11	27/11	29/11	30/11								
SNO	ROLL NO	NAME	1	2	3	4	5	6	7	8	9	10	11	12	13	14	15	16	17	18	19	20	21	22	23	24	25	26	27	28	29	30
1	176Y5A0213	NAGULA RAVALI	1	2	3	4	5	6	7	8	9	10	11	12	13	14	15	16	17	18	19	20	21	22	23	24	25	26	27	28	29	30
2	176Y5A0214	NALLAVENI SINDHU PRIYA	1	2	3	4	5	6	7	8	9	10	A	11	12	13	14	15	16	17	18	19	20	21	22	23	24	25	26	27	28	29
3	176Y5A0215	PENDOTA BHARGAVI	1	2	3	4	5	6	7	8	9	10	11	12	A	13	14	15	16	A	17	18	19	20	21	22	23	24	25	26	27	28
4	176Y5A0216	PULLURI ALEKYA	1	2	3	4	5	6	7	8	9	10	11	A	12	13	14	15	16	17	18	19	20	21	22	23	24	25	A	A	26	27
5	176Y5A0217	VASKULA SHINEY	1	2	3	4	5	6	7	8	9	10	A	11	12	13	14	15	16	A	17	18	19	20	21	A	A	22	23	24	25	26
6	186Y1A05A0	SAMRA ALEEM	1	2	3	4	5	6	7	8	9	10	11	12	13	14	15	16	17	18	19	20	21	22	23	24	25	26	27	28	29	30
7	186Y1A05A1	SHAIK SONI	1	2	A	3	4	5	6	7	8	A	9	10	11	12	13	14	15	16	17	18	19	20	21	22	23	24	25	26	A	27
8	186Y1A05A2	SHAVALLA SHIREESHA	1	2	3	4	5	6	7	8	9	10	11	12	13	14	15	16	17	18	A	A	A	19	20	21	22	A	23	24	25	26
9	196Y5A0401	ANTHONY LORINA JOSEPH	1	2	3	4	5	A	6	7	8	9	10	11	12	13	14	15	16	17	A	18	19	20	21	A	22	23	24	25	26	27
10	196Y5A0402	CHILUVERU SHIRISHA	1	2	3	4	5	6	7	8	9	10	A	11	12	13	14	15	16	17	18	19	20	21	22	23	A	24	25	26	27	28
11	196Y5A0403	DEVULAPALLY NIKHITHA	1	2	3	4	5	6	7	8	A	A	A	9	10	11	12	13	14	15	16	17	18	19	20	21	22	23	24	25	26	27
12	196Y5A0404	GORANTALA SAI SHIVANI	1	2	A	3	4	5	6	7	8	9	10	11	12	13	14	15	16	17	18	19	20	21	22	23	24	25	26	27	28	29
13	196Y5A0405	GOURU MANISHA	1	2	3	4	5	6	A	7	8	9	10	11	12	13	14	15	16	17	18	19	A	20	21	22	23	24	25	26	27	28
14	196Y5A0406	JERRIPOTHULA SUSMITHA	1	2	3	A	4	5	6	7	8	9	10	11	12	13	14	15	16	17	18	19	20	21	22	A	23	24	25	26	27	28
15	196Y5A0407	JETTY RAMYA	1	2	A	3	4	5	6	7	8	9	10	11	12	13	14	15	16	17	18	19	20	21	22	23	24	25	A	26	27	28
16	196Y5A0408	KANDAGATLA NEETHA	1	2	3	4	A	5	6	7	8	9	10	A	11	12	13	14	15	16	17	18	19	20	21	22	23	24	25	26	27	28
17	196Y5A0409	KASULA SHIVANI	A	2	3	4	5	6	7	8	9	10	11	12	13	14	15	16	17	18	A	19	20	21	22	23	24	25	26	27	28	29
18	196Y5A0410	KHUSTAR JAHAN	1	2	3	4	5	A	6	7	8	9	10	11	12	13	A	14	15	16	17	18	19	20	21	A	22	23	24	25	26	27
19	196Y5A0411	KONGARI KEERTHANA	1	2	3	4	5	6	A	7	8	9	10	11	12	13	14	15	A	16	17	18	19	20	21	22	23	24	25	A	26	27
20	196Y5A0412	MACCHA SARASWATHI	1	2	3	A	4	5	6	7	8	9	10	A	11	12	13	A	14	15	16	17	18	19	20	21	A	22	23	24	25	26
21	196Y5A0413	MASIHA NAAZ	1	2	A	3	4	5	6	7	8	9	10	11	12	13	14	15	16	17	18	19	20	A	21	22	23	24	25	26	A	27
22	196Y5A0414	MITTAPALLI MADHUMITHA	1	2	A	3	4	5	6	7	8	9	10	11	12	13	14	15	16	17	18	19	20	21	22	23	24	25	26	27	28	29
23	196Y5A0415	RANIYA ZAINAB	1	2	A	3	4	5	6	7	8	9	10	11	12	13	A	14	15	16	17	18	19	20	21	22	23	24	25	26	27	28
24	196Y5A0416	RAVULA NIHARIKA	1	2	3	4	A	5	6	7	8	9	10	11	12	A	13	14	15	16	17	18	19	20	A	21	22	23	24	25	A	26
25	18RH1A0480	GURRAM YASHASWI	1	2	3	4	5	6	A	7	8	9	10	11	12	13	A	14	15	16	17	18	19	20	A	21	22	23	24	25	26	A
26	186Y5A0403	BURRA NAVYA	1	2	3	A	4	5	6	7	8	9	10	11	12	13	14	15	16	17	18	19	20	A	21	22	23	24	25	26	27	A
27	216Y5A0401	ANUMANDLA RISHIKA	1	2	3	4	5	6	7	8	9	10	11	12	A	13	14	15	16	17	18	19	20	A	21	22	23	24	25	A	26	27
28	216Y5A0402	ARSHIYA TABASSUM	1	2	A	3	4	5	6	7	8	9	10	A	11	12	13	14	15	16	17	18	19	20	A	21	22	23	24	25	26	27
29	216Y5A0403	BAISA SHIVANI BAI	1	2	3	A	4	5	6	7	8	9	10	11	12	13	14	15	16	17	18	19	20	21	A	22	23	24	25	A	26	A
30	216Y5A0404	BAJYAM KAVYA	A	2	3	4	5	6	7	8	9	10	11	12	13	14	15	16	17	18	A	19	20	21	22	23	24	25	26	27	28	29
31	216Y5A0405	BANDIKATLA SHIVANI	1	2	3	4	5	A	6	7	8	9	10	11	12	13	14	15	16	17	18	19	20	21	A	22	23	24	25	26	27	28
32	216Y5A0406	BOGA SAHITHYA	1	2	A	3	4	5	6	7	8	9	10	11	12	13	14	15	16	17	18	19	20	21	A	22	23	24	25	26	27	28
33	216Y5A0407	BOLUKONDA GAYATHRI	1	2	3	A	4	5	6	7	8	9	10	11	12	13	14	15	16	17	18	19	20	21	A	22	23	24	25	26	27	28
34	216Y5A0408	CHINTHAKINDI KAVYA	1	2	3	4	5	6	A	7	8	9	10	11	12	13	14	15	16	17	A	18	19	20	21	A	22	23	24	25	26	27
35	216Y5A0409	DONTHULA PRASANNA	1	2	3	4	5	6	7	8	9	10	11	12	13	14	15	A	16	17	18	A	19	20	21	22	23	24	25	26	27	28

Principal
Sundar Reddy Institute of Technology for Women
Ananthasagar, Hasnampet (M)
WARANGAL - 506 371 (TS)

Course Instructor : K.RAVI KIRAN

[illegible]

Ryan

Principal

**Sumathi Reddy Institute of Technology for Women
Ananthasagar (V), Hasanparthy (M)
WARANGAL - 506 371 (TS)**

PCB DESIGNING

BATCH-2

Course Instructor : K.RAVI KIRAN

PCB DESIGNING			BATCH-2																		Course Name: PCB Designing																	
DATE :			19/10	21/10	21/10	22/10	23/10	24/10	24/10	25/10	26/10	30/10	30/10	31/10	1/11	2/11	2/11	4/11	5/11	6/11	7/11	8/11	8/11	11/11	13/11	14/11	14/11	15/11	16/11	16/11	18/11	18/11						
SNO	ROLL NO	NAME	1	2	3	4	5	6	7	8	9	10	11	12	13	14	15	16	17	18	19	20	21	22	23	24	25	26	27	28	29	30						
36	216Y5A0410	HUSNA HUMERA	1	2	3	A	4	5	6	7	A	8	9	10	11	12	13	14	15	16	17	A	18	19	20	21	22	23	24	25	26	A						
37	216Y5A0411	KATKURI SUJITH MEGHANA	1	2	3	4	5	6	7	8	9	10	11	12	13	14	A	15	16	17	18	19	20	21	22	23	24	25	26	27	A	28						
38	216Y5A0412	KOLIPAKA SOWMYA	1	2	3	4	5	A	6	7	8	A	9	10	11	12	13	14	15	16	17	18	19	20	21	A	22	23	24	25	26	27						
39	216Y5A0413	KUNDURU PRANAVI	1	A	2	3	4	5	6	A	7	8	9	10	A	A	11	12	13	14	15	16	17	18	19	20	21	A	22	23	24	A						
40	216Y5A0414	MADIGA PRATHYUSHA	1	2	3	4	A	5	6	7	8	9	A	10	11	12	13	A	14	15	16	17	18	19	20	21	22	23	24	25	26	27						
41	216Y5A0415	MANDA CHANDANA	1	2	3	4	5	6	7	8	9	10	11	12	13	14	15	16	17	18	19	20	21	22	23	24	25	26	27	A	28	29						
42	216Y5A0416	MILKURI SHUSHRUTHA	1	A	A	2	3	4	5	6	7	8	9	10	11	12	13	14	15	16	17	18	19	20	21	22	23	24	25	26	27	28						
43	216Y5A0417	MUNJA KALYANI	1	2	3	4	5	A	A	6	7	8	9	A	10	11	12	13	14	15	16	17	18	19	20	21	22	A	23	24	25	26						

Rijan

Principal

Sumathi Reddy Institute of Technology for Women
 Ananthasagar (V), Hasanparthy (M)
 WARANGAL - 506 371 (TS)

Course Instructor : K.RAVI KIRAN

R. Nefra
Course Co-ordinator

Rijan
Principal
Sumathi Reddy Institute of Technology for Women
Ananthasagar (V), Hasanparthy (M)
WARANGAL - 506 371 (TS)



SUMATHI REDDY

INSTITUTE OF TECHNOLOGY FOR WOMEN

Learning at its best

Affiliated to JNTUH - Approved by AICTE

Students Eligible for Certification as per Eligibility Criteria

Course: PCB Designing

Date: 27-01-2020 to 02-03-2020

S.No	Roll number	Name	Marks
1	206Y1A0441	PARIPELLI NAVYA	22
2	206Y1A0442	PASHIKANTI SANITHA	23
3	206Y1A0443	PASHIKANTI VISHWANI	18
4	206Y1A0444	PENDYALA AKHILA	18
5	206Y1A0445	PENDYALA HARITHA	19
6	206Y1A0446	PITTA NIKSHIPHA	20
7	206Y1A0447	POTHARAJU GAYATHRI	20
8	206Y1A0448	PUTTAPAKA SANJANA	24
9	206Y1A0449	RACHAKONDA MALAVIKA	22
10	206Y1A0450	RAJOJU VINEELA	23
11	206Y1A0451	RASA SINDHU	18
12	206Y1A0452	SARA USHA	18
13	206Y1A0453	SHRUNGARAPU AKHILA	19
14	206Y1A0454	SINDHE GAYATHRI	20
15	206Y1A0455	SREERAMOJU SUNETHRI	20
16	206Y1A0456	THALLAPELLE SHIRISHA	24
17	206Y1A0457	THATIKONDA VAISHNAVI	22
18	206Y1A0458	THATIPAMULA JAAHNAVE	23
19	206Y1A0459	THELU POOJITHA	18
20	206Y1A0460	THUMMA MEGHANA	18
21	206Y1A0461	VURA AKHILA	19
22	206Y1A0462	YEBUSHI NIKITHA	20
23	166Y1A0224	VEERAMALLA MEGHANA	20
24	176Y5A0201	ANUMALA SHIRISHA	24
25	176Y5A0202	CHENNURI JYOTHSNA	22
26	176Y5A0203	DUDELA SUNILA	23
27	176Y5A0204	KADEVERGULA VISHNUPRIYA	18
28	176Y5A0205	KALLEM GOUTHAMI	18
29	176Y5A0206	KANDULA NIKITHA	19
30	176Y5A0207	KUNDE MANEESHA	20
31	176Y5A0208	MADASU PRIYANKA	20
32	176Y5A0217	VASKULA SHINEY	24
33	186Y1A05A0	SAMRA ALEEM	22
34	186Y1A05A1	SHAIK SONI	23
35	186Y1A05A2	SHAVALLA SHIREESHA	18
36	196Y5A0401	ANTHONY LORINA JOSEPH	18
37	196Y5A0402	CHILUVERU SHIRISHA	19

Rajan
Principal

Ananthasagar, Hasanparthy, Warangal - 506371, Telangana

Phoneno: 0870-2818302. Email: principal@arity.org

Ananthasagar (M), Hasanparthy (M)
WARANGAL - 506 371 (TS)



SUMATHI REDDY

INSTITUTE OF TECHNOLOGY FOR WOMEN

Learning at its best

Affiliated to JNTUH - Approved by AICTE

38	196Y5A0403	DEVULAPALLY NIKHITHA	20
39	196Y5A0404	GORANTALA SAI SHIVANI	20
40	196Y5A0405	GOURU MANISHA	24
41	196Y5A0406	JERRIPOTHULA SUSMITHA	22
42	196Y5A0407	JETTY RAMYA	23
43	196Y5A0408	KANDAGATLA NEETHA	18
44	196Y5A0409	KASULA SHIVANI	18
45	196Y5A0410	KHUSTAR JAHAN	19
46	196Y5A0411	KONGARI KEERTHANA	20
47	196Y5A0412	MACCHA SARASWTHI	20
48	196Y5A0413	MASIHA NAAZ	24
49	196Y5A0414	MITTAPALLI MADHUMITHA	22
50	196Y5A0415	RANIYA ZAINAB	23
51	196Y5A0416	RAVULA NIHARIKA	18
52	196Y8A0401	GURRAM YASHASWI	18
53	186Y5A0403	BURRA NAVYA	19
54	216Y5A0401	ANUMANDLA RISHIKA	20
55	216Y5A0402	ARSHIYA TABASSUM	20
56	216Y5A0403	BAISA SHIVANI BAI	24
57	216Y5A0404	BAJYAM KAVYA	22
58	216Y5A0405	BANDIKATLA SHIVANI	23
59	216Y5A0406	BOGA SAHITHYA	18
60	216Y5A0407	BOLUKONDA GAYATHRI	18
61	216Y5A0408	CHINTHAKINDI KAVYA	19
62	216Y5A0409	DONTHULA PRASANNA	20
63	216Y5A0410	HUSNA HUMERA	20
64	216Y5A0411	KATKURI SUJITH MEGHANA	24
65	216Y5A0412	KOLIPAKA SOWMYA	22
66	216Y5A0413	KUNDURU PRANAVI	23
67	216Y5A0414	MADIGA PRATHYUSHA	18
68	216Y5A0415	MANDA CHANDANA	18
69	216Y5A0416	MILKURI SHUSHRUTHA	19
70	216Y5A0417	MUNJA KALYANI	20

R. Netha
Course-coordinator

Rijan

Principal

Ananthasagar, Hasanparthy, Warangal -506371, Telangana. Website: www.sritw.org
Phoneno: 0870-2818302. Email: principal@sritw.org
Sumathi Reddy Institute of Technology for Women
Ananthasagar (M), Hasanparthy (M)
WARANGAL - 506 371 (TS)



SUMATHI REDDY

INSTITUTE OF TECHNOLOGY FOR WOMEN

Learning at its best

Affiliated to JNTUH - Approved by AICTE

Test (PCB DESIGNING)

216Y5A0409

D. Prasanna

Marks: 25

Duration: 1hr

1) Which phenomenon is not reduced by the circuit paths of lowest impedances especially provided by power and return planes for shielding purposes?

- a) Radiation b) Convection c) Noise d) Crosstalk

[b]

2) High current circuits are purposely located or placed near the edge of PCB in accordance to the supply lines for _____

- a) Removal of heat b) Isolation of stray current c) Reduction of path length d) All of the above

[a]

3) Which among the below stated soldering methods is also renowned as "High Frequency Resistance Soldering"?

- a) Iron Soldering b) Furnace Soldering c) Torch Soldering d) Electrical Soldering

[b]

4) bIf a circuit uses 1200 volts at 800mA, what is the input power?

- a) 1000 watts b) 554 watts c) 300 watts d) 960watts

[d]

5) Which among the below mentioned packages does not belong to the category of 'Small Outline Package'?

- a) SO b) SOP c) SOT d) SON

[d]

6) Which type of solderability testing is carried out for the generation of solder sample due to immersion of wire or sheet metal specimen in a bath of molten solder?

- a) Solder Bath Testing b) Meniscus Rise Testing c) Solder Iron Testing d) None of the above

[b]

7) What is/are the necessity/ies to provide guarding to precision differential amplifiers?

- a) To increase leakage resistance b) To reduce capacitance between signal conductors & ground
c) Both a and b d) None of the above

[d]

8) Which among the below mentioned assertions is not a way of cross-talk reduction while designing digital PCBs?

- a) Decrease in the distance between conductors b) Shielding of clock lines with guard strips
c) Reduction in the loop area of circuits d) Avoid running of parallel traces for longer distances especially for asynchronous signals

[a]

9) Which among the below specified assertions is not a grounding consideration associated with ADC as well as DAC?

- a) Analog side to analog ground b) Digital side to digital ground
c) Use of separate power supply and connection of their ground leads to single point reference
d) Reduction of inductive loop area between power and return traces

[b]

10) Which among the below stated devices/equipments are preferred for elimination of ground and supply line noise especially in TTL/CMOS / ECL PCB designing?

[b]

Principal

Sumathi Reddy Institute of Technology for Women
Ananthasagar (V), Hasanparthy (M)
WARANGAL - 506 371 (TS)



SUMATHI REDDY

INSTITUTE OF TECHNOLOGY FOR WOMEN

Learning at its best

Affiliated to JNTUH - Approved by AICTE

- a) Coupling capacitor b) Decoupling capacitor c) Snubber circuits d) All of the above
- 11) Which terminology of PCB represents a thin photo-sensitive polymer by supporting photographic pattern of single traces or IC pads for etching? [C]
a) Prepreg b) Etching c) Photo-resist d) Solder mask
- 12) Which problems are about to occur if PCB is not designed properly in a confined manner for digital circuits? [C]
A) Diffraction B) Refraction C) Ground & Supply-line Noise D) Electromagnetic Interference
a) A & B b) B & C c) C & D d) A, B, C, D
- 13) The actual cost of PCB can be evaluated on the basis of [d]
a) PCB size & material b) Number of layers c) Vias on PCB d) All of the above
- 14) Which factors contribute to the occurrence of mechanical stress? [a]
a) Resonance b) Cracked Solder Joints c) Both a and b d) None of the above
- 15) Which type of PCB requires minimum soldering on component side in order to avoid replacement oriented difficulties? [b]
a) Single-sided PCB b) Double-sided PCB c) Both a and b d) None of the above
- 16) Which of the following is not a property of semiconductors used in electronic devices? [b]
a) They excite electrons b) They don't emit light
c) They have high thermal conductivity d) they have variable electrical conductivity
- 17) Which of the following is correct about semiconductors in electronic devices? [c]
a) Elemental semiconductors have direct band gap b) Compound semiconductors have indirect band gap
c) Extrinsic semiconductors are injected with impurities d) Doping is done in Intrinsic semiconductors
- 18) Which of the following is correct about Hall Effect in electronic circuits? [b]
a) Hall voltage is very weak in metals as compared to semiconductors
b) Hall voltage is directly proportional to the charge density
c) Hall voltage is inversely proportional to the intensity of the magnetic field
d) Intrinsic semiconductor has a positive temperature coefficient of hall constant
- 19) Which of the following semiconductor is mostly used to construct electronic circuits? [a]
a) Silicon b) Germanium c) Selenium d) Tin
- 20) Which of the following diode is used in ultra-high speed switching electronic circuits? [c]
a) Zener diode b) Varactor diode c) Tunnel diode d) Schottky diode
- 21) What type of semiconductor is used in LED electronic circuits? [B]
a) Intrinsic semiconductor b) Compound semiconductor
c) Degenerated semiconductor d) Compensated semiconductor

Principal

Sumathi Reddy Institute of Technology for Women
Ananthasagar (V), Hasanparthy (M)
WARANGAL - 506 371 (TS)



SUMATHI REDDY

INSTITUTE OF TECHNOLOGY FOR WOMEN

Learning at its best

Affiliated to JNTUH - Approved by AICTE

- 22) Which of the following technique can't be used for generating electron-hole pairs in electronic devices? [d]
- a) Thermal excitation b) Impact ionization c) Photo excitation d) Impurity injection
- 23) Mass action law is not valid for which type of semiconductors in electronic devices? [C]
- a) Compound b) Elemental c) Degenerative d) Compensated
- 24) Mass action law is not valid for which type of semiconductors in electronic devices? [C]
- a) Compound b) Elemental c) Degenerative d) Compensated
- 25) What is the conductivity of an extrinsic type semiconductor electronic device at 0K? [b]
- a) maximum b) zero c) can't be determined d) minimum

Rijan

Principal

**Sumathi Reddy Institute of Technology for Women
Ananthasagar (V), Hasanparthy (M)
WARANGAL - 506 371 (TS)**



SUMATHI REDDY

INSTITUTE OF TECHNOLOGY FOR WOMEN

Learning at its best

Affiliated to JNTUH - Approved by AICTE

Test (PCB DESIGNING)

Ch. Kavya
216Y5A0408

Marks: 25

Duration: 1hr

- 1) Which phenomenon is not reduced by the circuit paths of lowest impedances especially provided by power and return planes for shielding purposes?
a) Radiation b) Convection c) Noise d) Crosstalk [b]
- 2) High current circuits are purposely located or placed near the edge of PCB in accordance to the supply lines for _____
a) Removal of heat b) Isolation of stray current c) Reduction of path length d) All of the above [a]
- 3) Which among the below stated soldering methods is also renowned as 'High Frequency Resistance Soldering'?
a) Iron Soldering b) Furnace Soldering c) Torch Soldering d) Electrical Soldering [a]
- 4) If a circuit uses 1200 volts at 800mA, what is the input power?
a) 1000 watts b) 554 watts c) 300 watts d) 960watts [d]
- 5) Which among the below mentioned packages does not belong to the category of 'Small Outline Package'?
a) SO b) SOP c) SOT d) SON [d]
- 6) Which type of solderability testing is carried out for the generation of solder sample due to immersion of wire or sheet metal specimen in a bath of molten solder?
a) Solder Bath Testing b) Meniscus Rise Testing c) Solder Iron Testing d) None of the above [b]
- 7) What is/are the necessity/ies to provide guarding to precision differential amplifiers?
a) To increase leakage resistance b) To reduce capacitance between signal conductors & ground c) Both a and b d) None of the above [c]
- 8) Which among the below mentioned assertions is not a way of cross-talk reduction while designing digital PCBs?
a) Decrease in the distance between conductors b) Shielding of clock lines with guard strips c) Reduction in the loop area of circuits d) Avoid running of parallel traces for longer distances especially for asynchronous signals [c]
- 9) Which among the below specified assertions is not a grounding consideration associated with ADC as well as DAC?
a) Analog side to analog ground b) Digital side to digital ground c) Use of separate power supply and connection of their ground leads to single point reference d) Reduction of inductive loop area between power and return traces [c]
- 10) Which among the below stated devices/equipments are preferred for elimination of ground and supply line noise especially in TTL/CMOS / ECL PCB designing?
[b]

Principal

Sumathi Reddy Institute of Technology for Women
Ananthasagar (V), Hasanparthy (M)
WARANGAL - 506 371 (TS)



SUMATHI REDDY

INSTITUTE OF TECHNOLOGY FOR WOMEN

Learning at its best

Affiliated to JNTUH - Approved by AICTE

- a) Coupling capacitor b) Decoupling capacitor c) Snubber circuits d) All of the above
- 11) Which terminology of PCB represents a thin photo-sensitive polymer by supporting photographic pattern of single traces or IC pads for etching? [c]
a) Prepreg b) Etching c) Photo-resist d) Solder mask
- 12) Which problems are about to occur if PCB is not designed properly in a confined manner for digital circuits? [c]
A) Diffraction B) Refraction C) Ground & Supply-line Noise D) Electromagnetic Interference
a) A & B b) B & C c) C & D d) A, B, C, D
- 13) The actual cost of PCB can be evaluated on the basis of [d]
a) PCB size & material b) Number of layers c) Vias on PCB d) All of the above
- 14) Which factors contribute to the occurrence of mechanical stress? [c]
a) Resonance b) Cracked Solder Joints c) Both a and b d) None of the above
- 15) Which type of PCB requires minimum soldering on component side in order to avoid replacement oriented difficulties? [d]
a) Single-sided PCB b) Double-sided PCB c) Both a and b d) None of the above
- 16) Which of the following is not a property of semiconductors used in electronic devices? [b]
a) They excite electrons b) They don't emit light
c) They have high thermal conductivity d) they have variable electrical conductivity
- 17) Which of the following is correct about semiconductors in electronic devices? [c]
a) Elemental semiconductors have direct band gap b) Compound semiconductors have indirect band gap
c) Extrinsic semiconductors are injected with impurities d) Doping is done in Intrinsic semiconductors
- 18) Which of the following is correct about Hall Effect in electronic circuits? [b]
a) Hall voltage is very weak in metals as compared to semiconductors
b) Hall voltage is directly proportional to the charge density
c) Hall voltage is inversely proportional to the intensity of the magnetic field
d) Intrinsic semiconductor has a positive temperature coefficient of hall constant
- 19) Which of the following semiconductor is mostly used to construct electronic circuits? [a]
a) Silicon b) Germanium c) Selenium d) Tin
- 20) Which of the following diode is used in ultra-high speed switching electronic circuits? [c]
a) Zener diode b) Varactor diode c) Tunnel diode d) Schottky diode
- 21) What type of semiconductor is used in LED electronic circuits? [d]
a) Intrinsic semiconductor b) Compound semiconductor
c) Degenerated semiconductor d) Compensated semiconductor

Principal

Sumathi Reddy Institute of Technology for Women
Ananthasagar (M), Hasanparthy (M)
WARANGAL - 506 371 (TS)



SUMATHI REDDY

INSTITUTE OF TECHNOLOGY FOR WOMEN

L e a r n i n g a t i t s b e s t

Affiliated to JNTUH - Approved by AICTE

22) Which of the following technique can't be used for generating electron-hole pairs in electronic devices?

- a) Thermal excitation b) Impact ionization c) Photo excitation d) Impurity injection [d]

23) Mass action law is not valid for which type of semiconductors in electronic devices? [c]

- a) Compound b) Elemental c) Degenerative d) Compensated

24) Mass action law is not valid for which type of semiconductors in electronic devices? [c]

- a) Compound b) Elemental c) Degenerative d) Compensated

25) What is the conductivity of an extrinsic type semiconductor electronic device at 0K? [b]

- a) maximum b) zero c) can't be determined d) minimum

Rijan

Principal

Sumathi Reddy Institute of Technology for Women

Ananthasagar (V), Hasanparthy (M)

WARANGAL - 506 371 (TS)



SUMATHI REDDY

INSTITUTE OF TECHNOLOGY FOR WOMEN

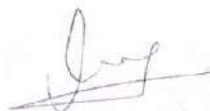
L e a r n i n g a t i t s b e s t

Certificate

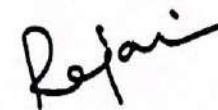
This is to Certify that SHAIK SONI bearing roll number 186Y1A05A1 has completed course on "PCB Designing" conducted during the period 27-01-2020 to 02-03-2020.



Ms.R.Nethravathi
Coordinator



Dr.K.Mahender sharma
Head of the Department



Dr.I.Rajasri Reddy
Principal



Principal



Sumathi Reddy Institute of Technology for Women
Ananthasagar (V), Hasanparthy (M)
WARANGAL - 506 371 (TS)



SUMATHI REDDY

INSTITUTE OF TECHNOLOGY FOR WOMEN

L e a r n i n g a t i t s b e s t

Certificate

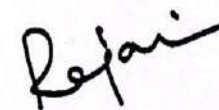
This is to Certify that BAISA SHIVANI BAI bearing roll number 216Y5A0403 has completed course on “ PCB Designing“ conducted during the period 27-01-2020 to 02-03-2020.



Ms.R.Nethravathi
Coordinator



Dr.K.Mahender sharma
Head of the Department



Dr.I.Rajasri Reddy
Principal


Principal

Sumathi Reddy Institute of Technology for Women
Ananthasagar (V), Hasanparthy (M)
WARANGAL - 506 371 (TS)